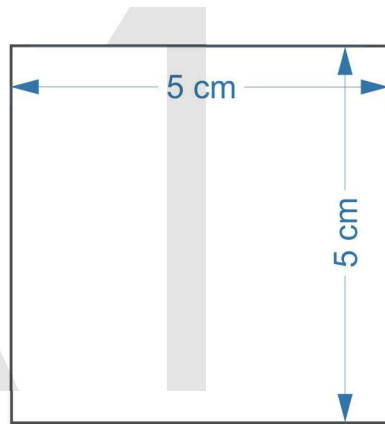
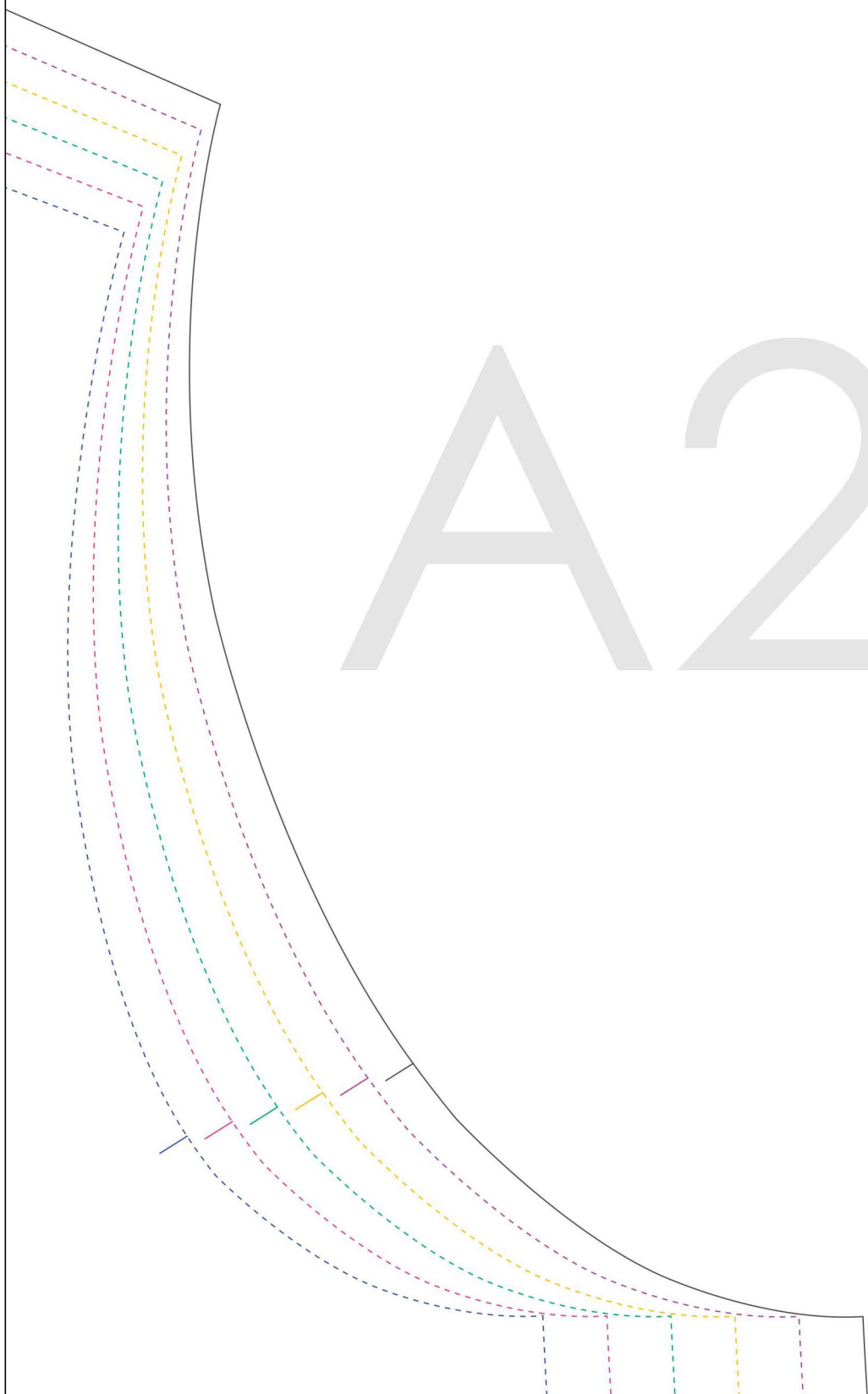


A



- _____ 46
- 44
- 42
- 40
- 38
- 36

A2

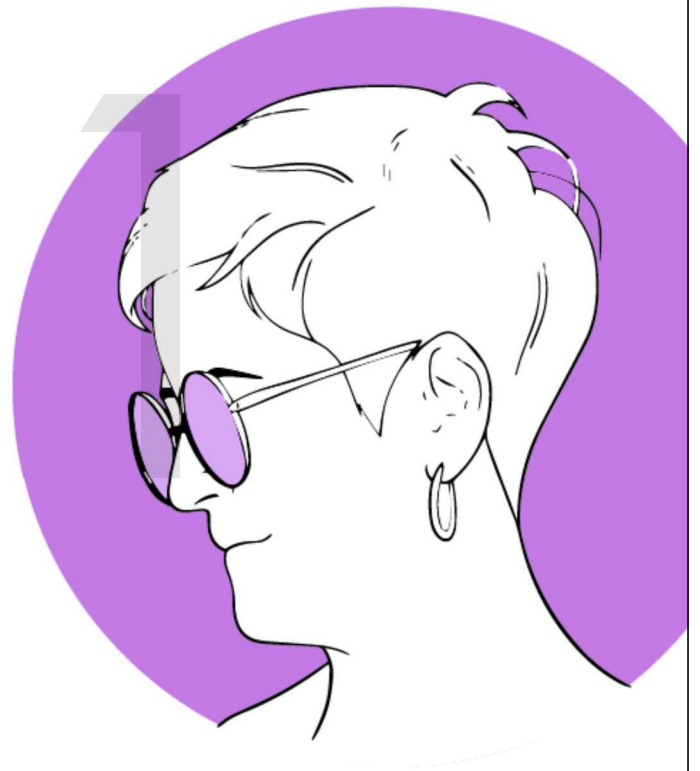


#fraumaerzdress

Vorderteil
1 x im Bruch zuschneiden

Front
1 x cut on fold

B



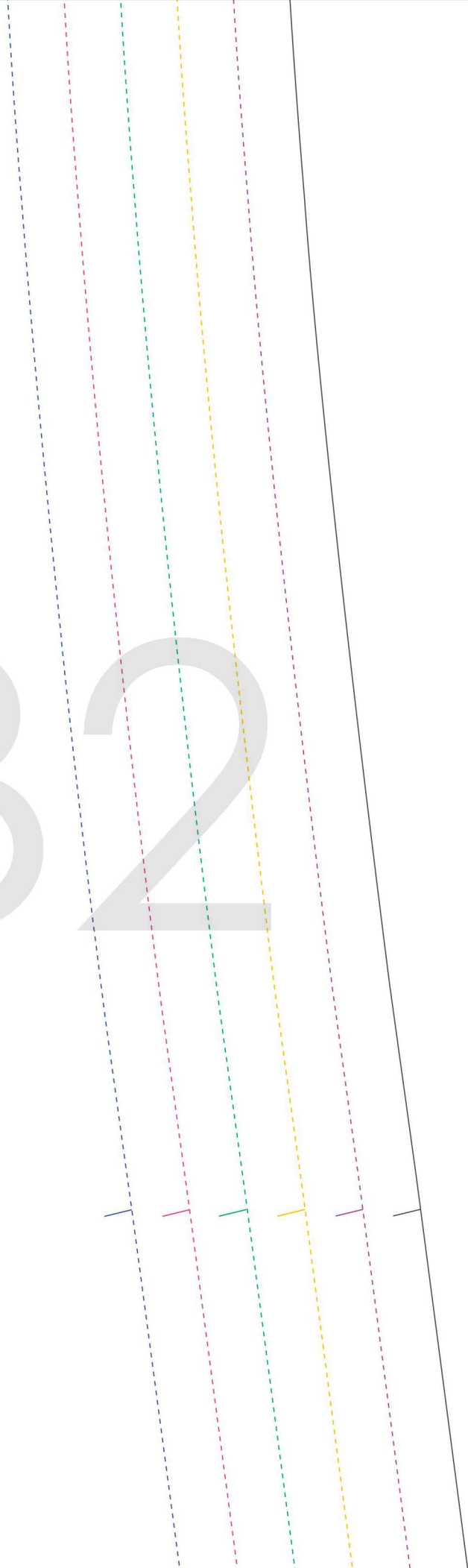
fabrics for your creati

by frau maerz



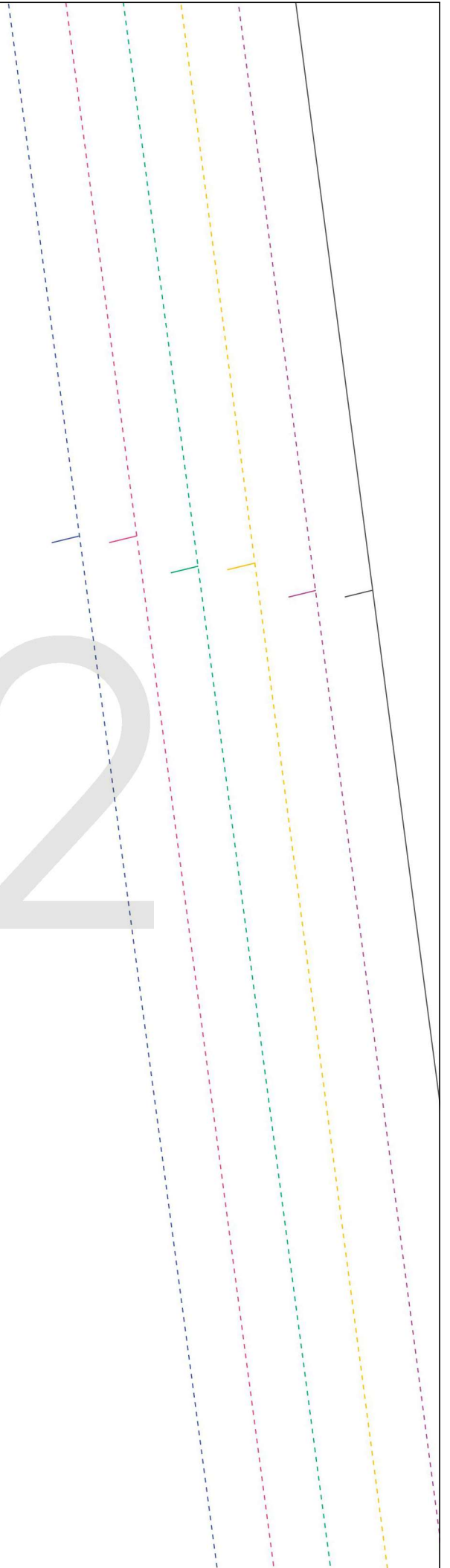
B2

vity



C1

C2



C3

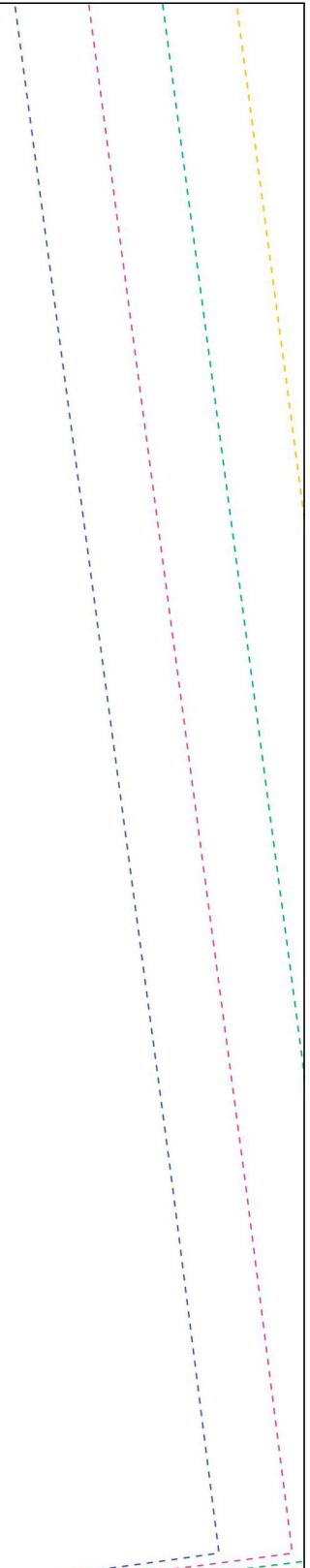
Stoffbruch/Fold

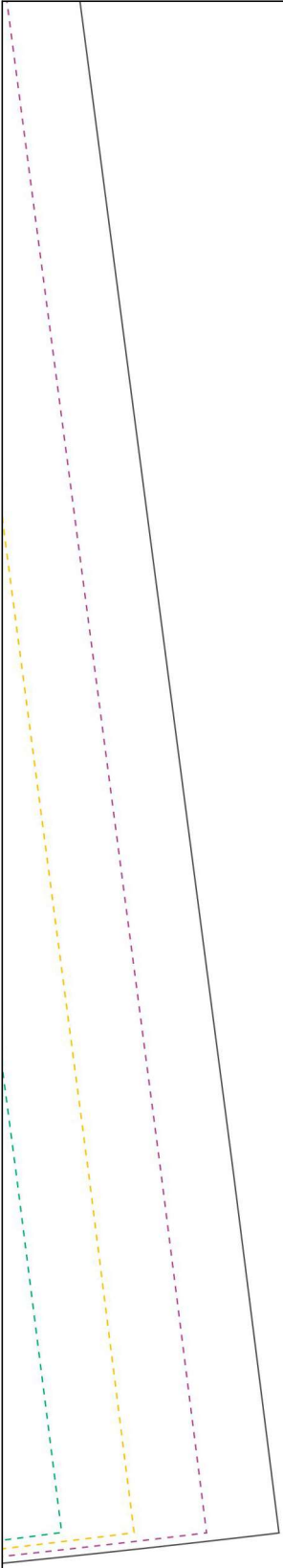
D1

Hemmers Itex
fabrics for your creativity

Der Schnitt enthält keine Nahtzugabe.
Seam allowance not included.

D2





D3

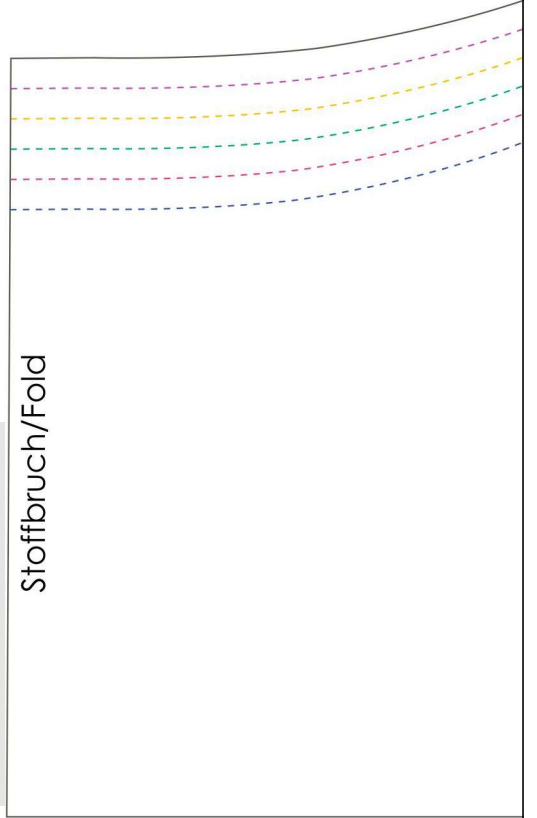
E

1

Stoffbruch/Fold



Falte





#fraumaerzdress

Rückenpasse
1 x im Bruch zuschneiden

back yoke
1 x cut on fold

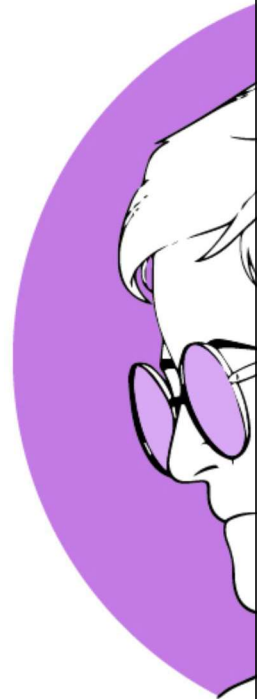
Stoffbruch/Fold

F1

#frau

1 x im B

1 x



fabrics f

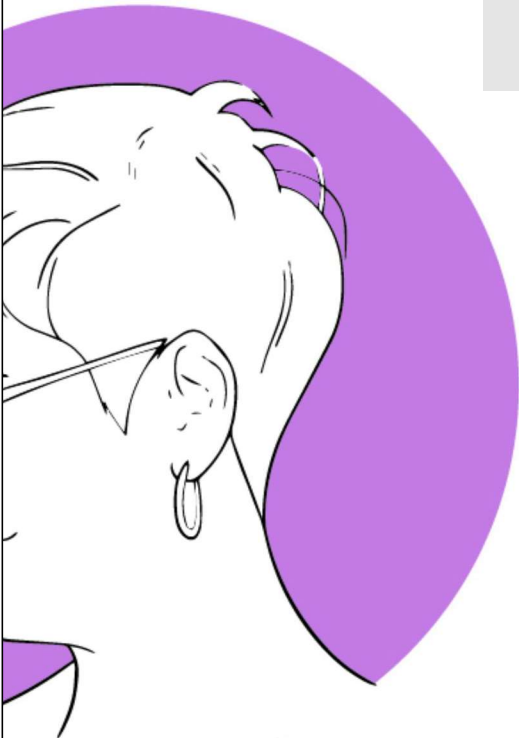
br

umaerzdress

Rückenteil
ruch zuschneiden

back
cut on fold

F2



or your creativity

u frau maerz



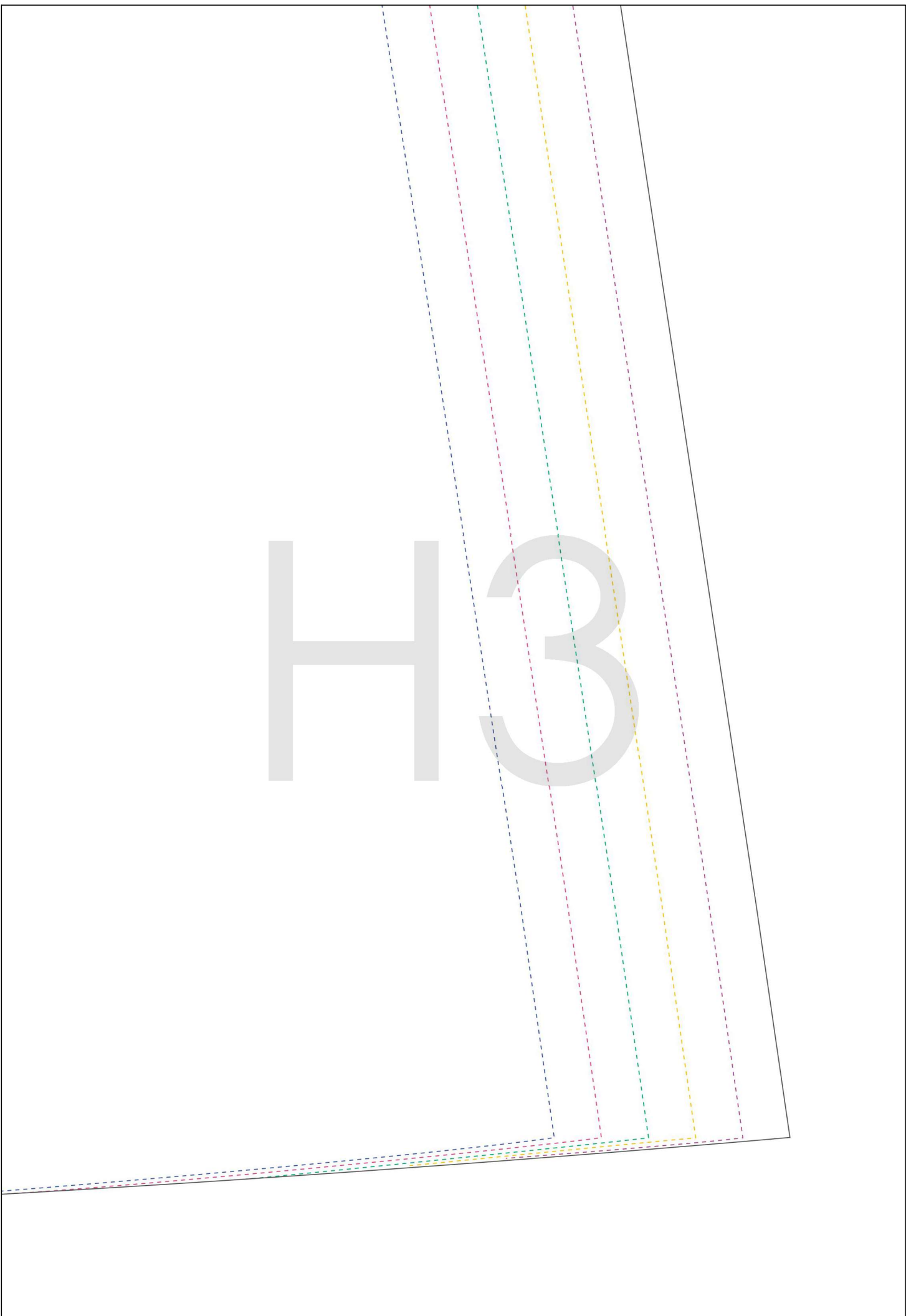
G2

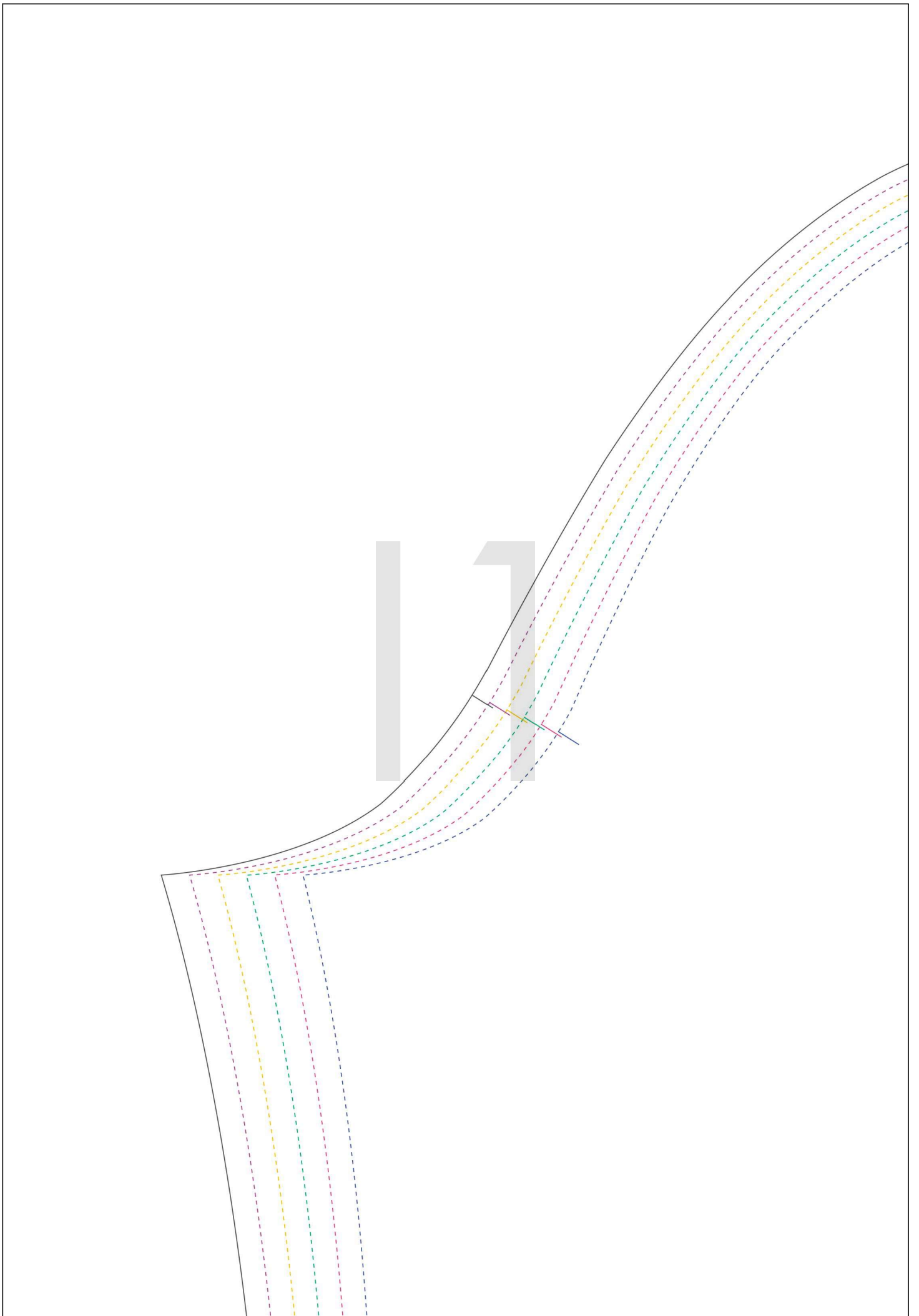
G3

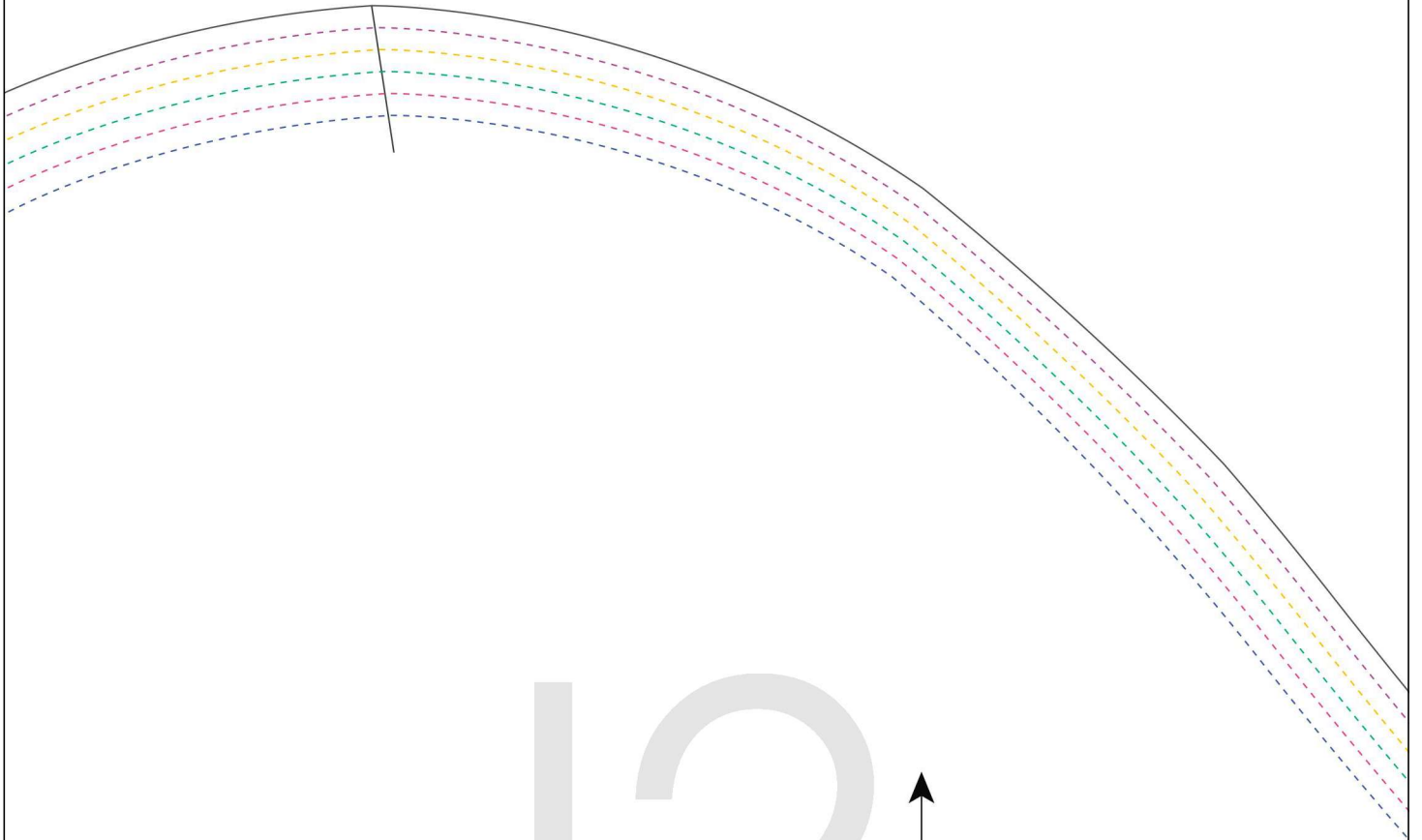
Н 1

H2

НЗ







12

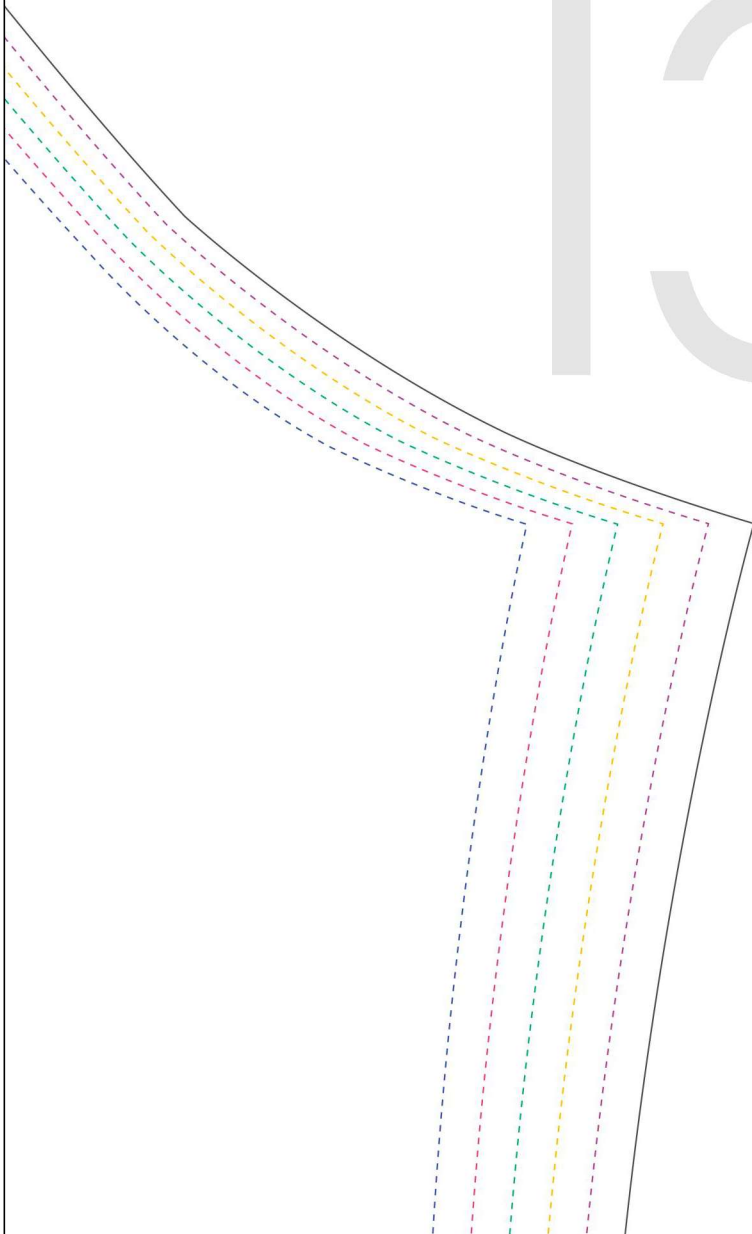
#fraumaerzdress

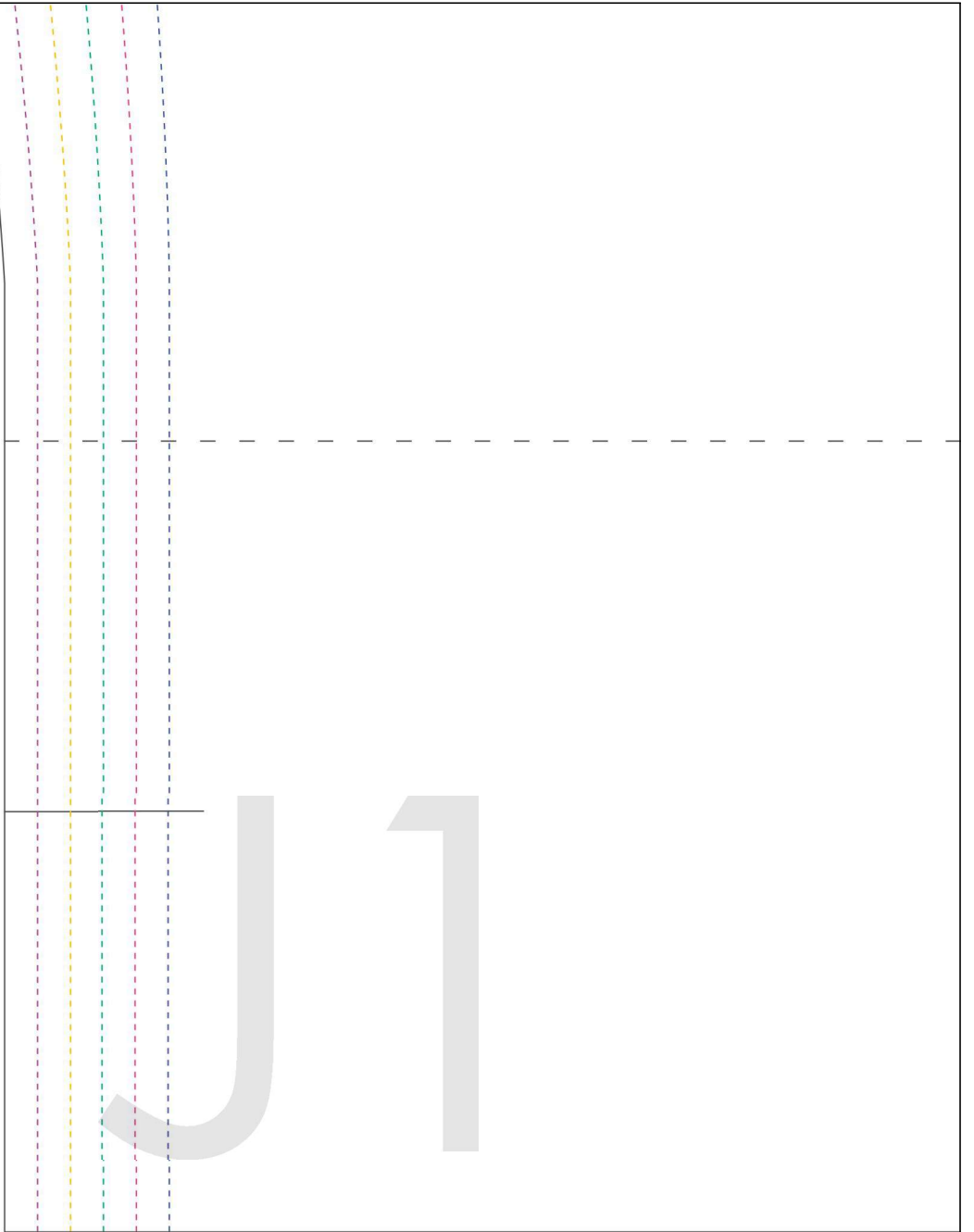
Ärmel
2 x

Sleeve
2 x

Fadenlauf/Straight grain

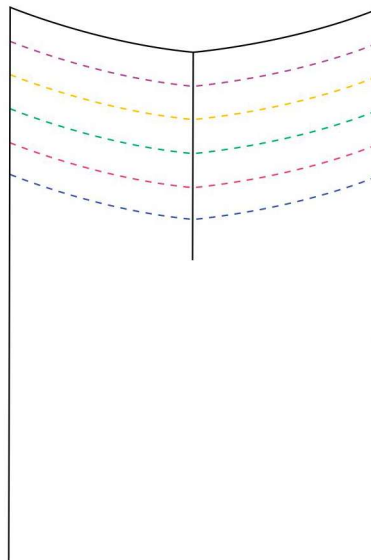
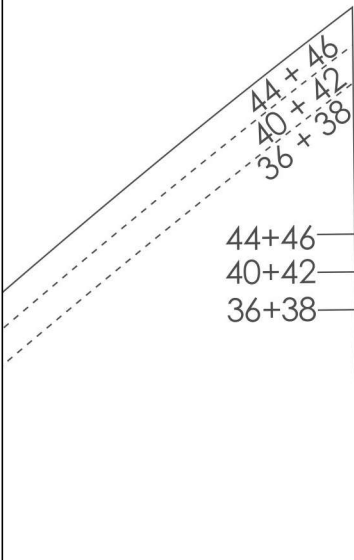
13







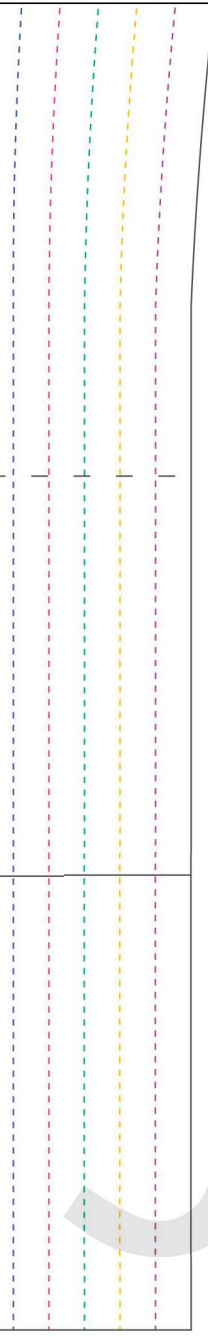
J 2



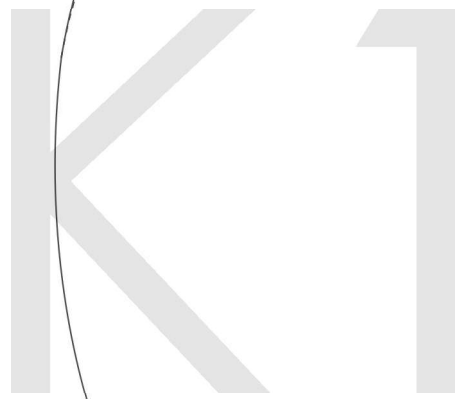
Stoffbruch/Fold

Kragen
2 x im Bruch

Collar
2 x cut on fold



U3

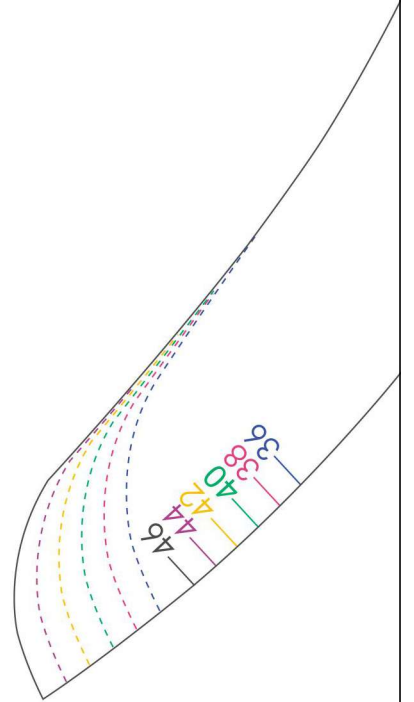
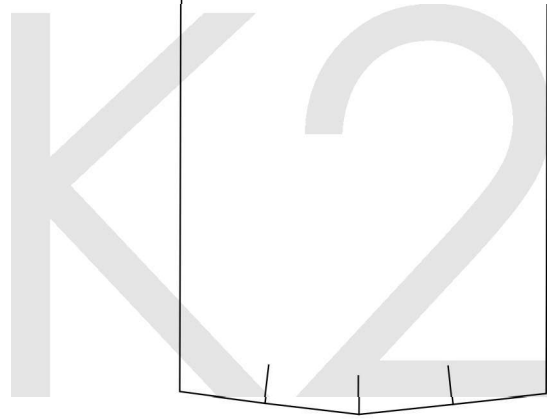


Taschen
4 x

Pockets
4 x

Ausschnittblende
2 x

Placket
2 x



36
46

K3