

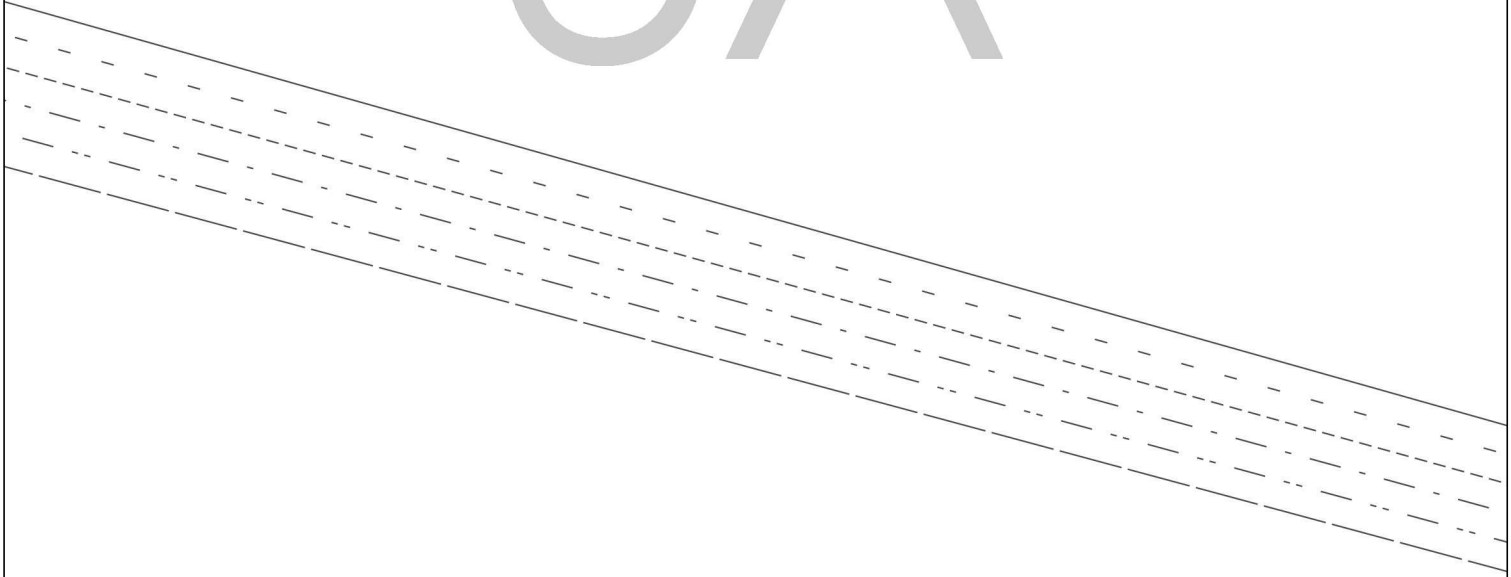
Der Schnitt enthält keine Nahtzu  
Seam allowance not included.

- 46 \_\_\_\_\_
- 44 - - - - -
- 42 - - - - -
- 40 - - - - -
- 38 - - - - -
- 36 - - - - -

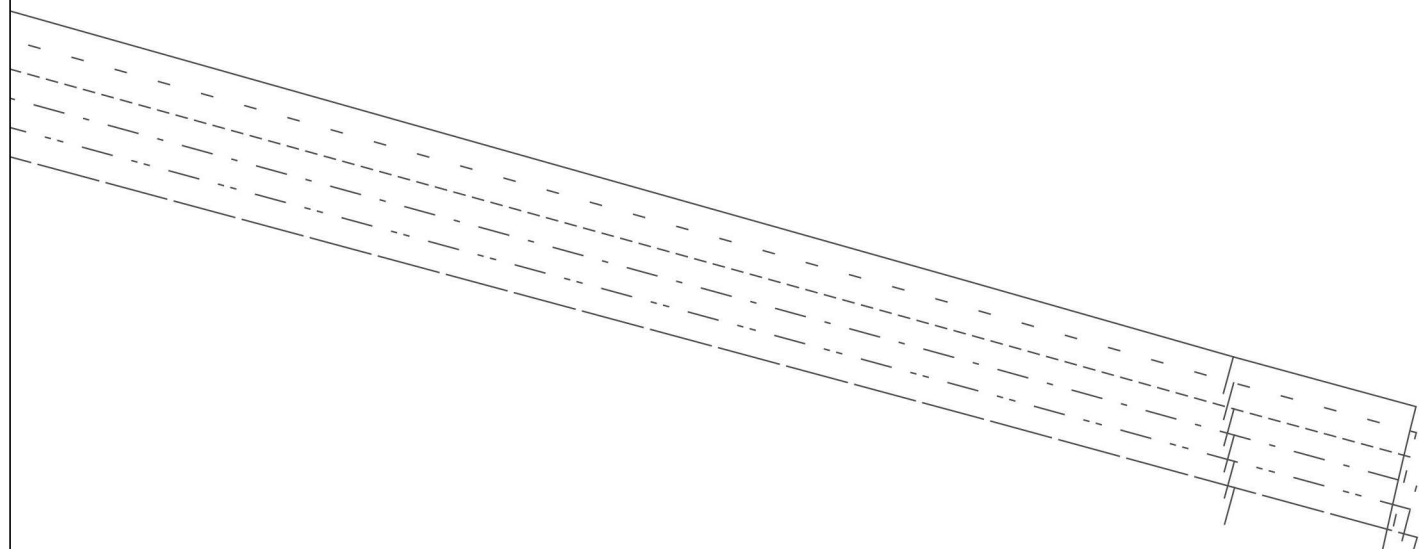


gabe.

3A



4A

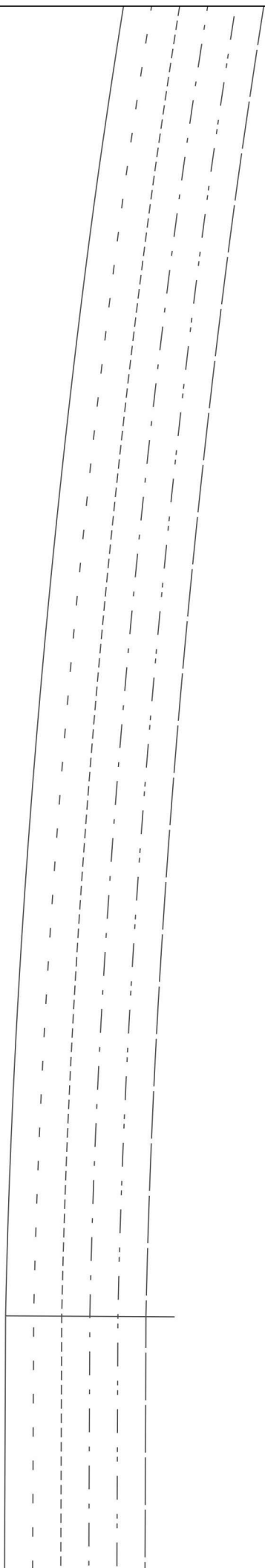


CARDIGA  
Vorder  
2

Fron  
2

Fadenlauf/ Grainline

1 B



N CINDY

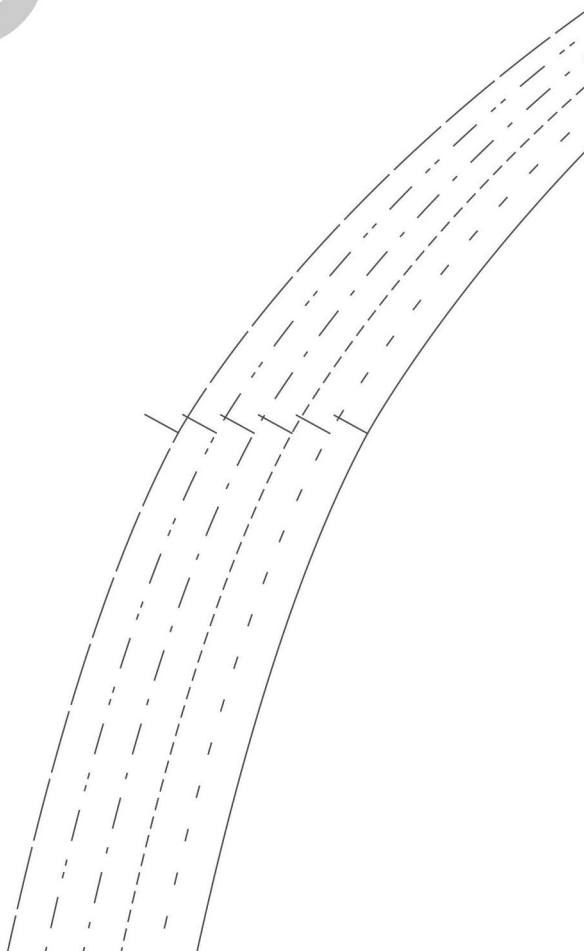
teil 1A

X

t 1A

X

2B



3B

Rückw. Besatz 1 x 1

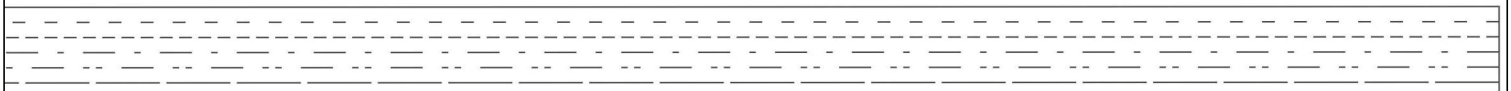
Neck Facing 1 x 1

**Hemmers Itex**  
fabrics for your creativity

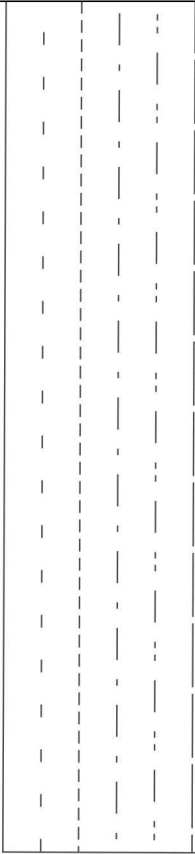


4B

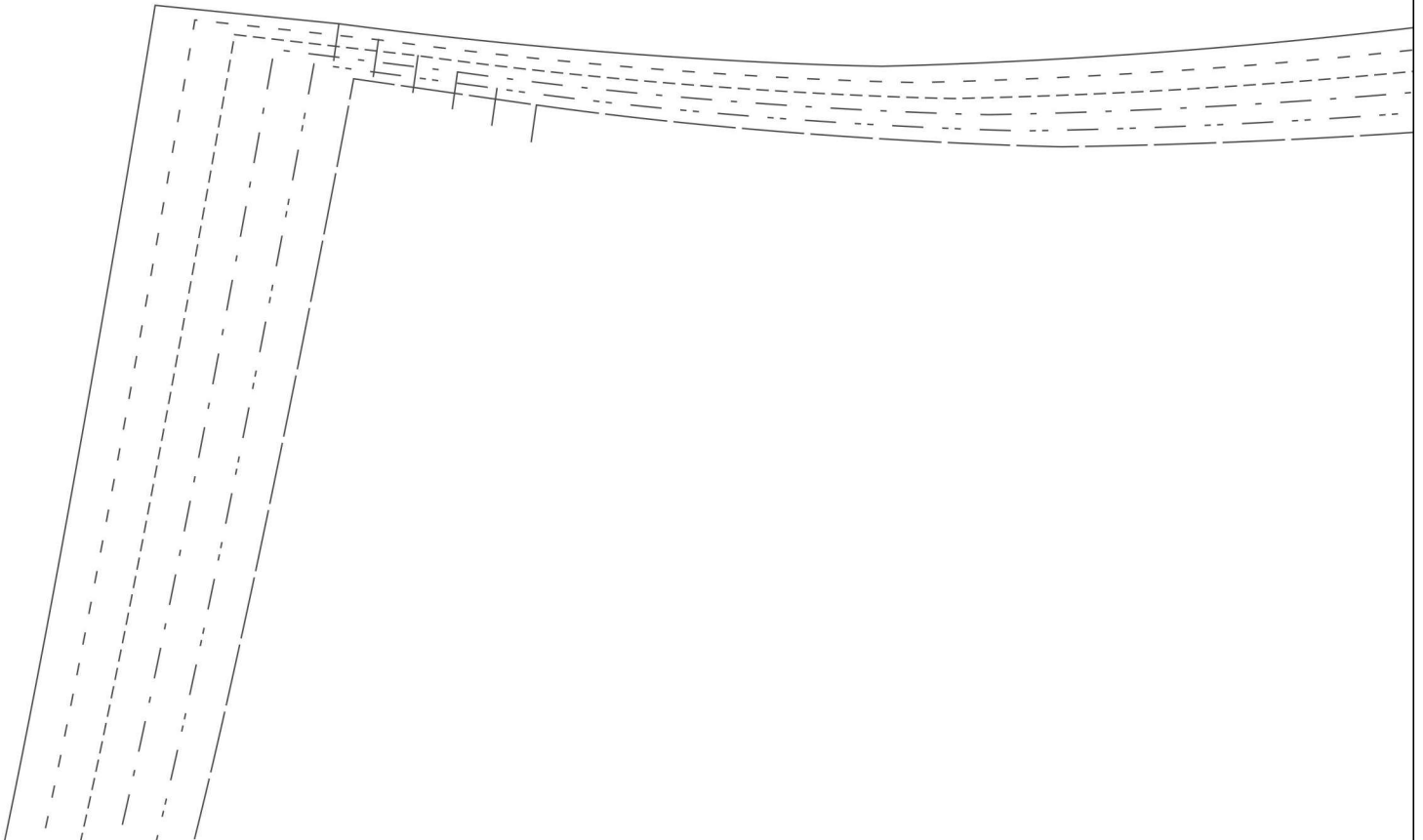
m Bruch  
on fold  
Fold  
Stoffbruch





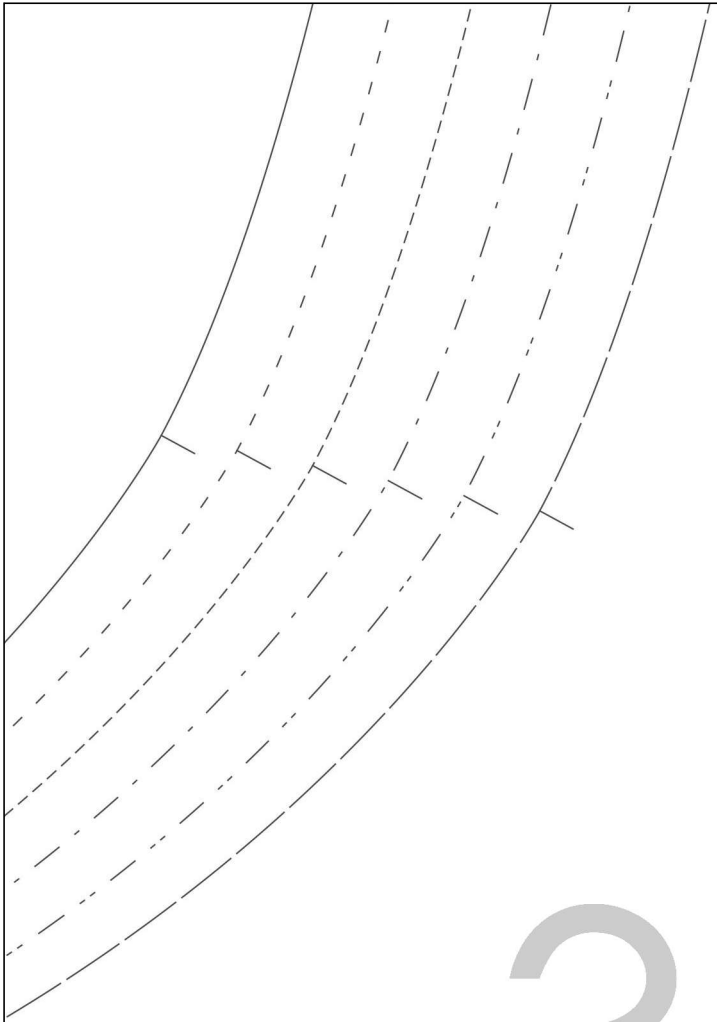


1C



**Hemmers Itex**  
*fabrics for your creativity*

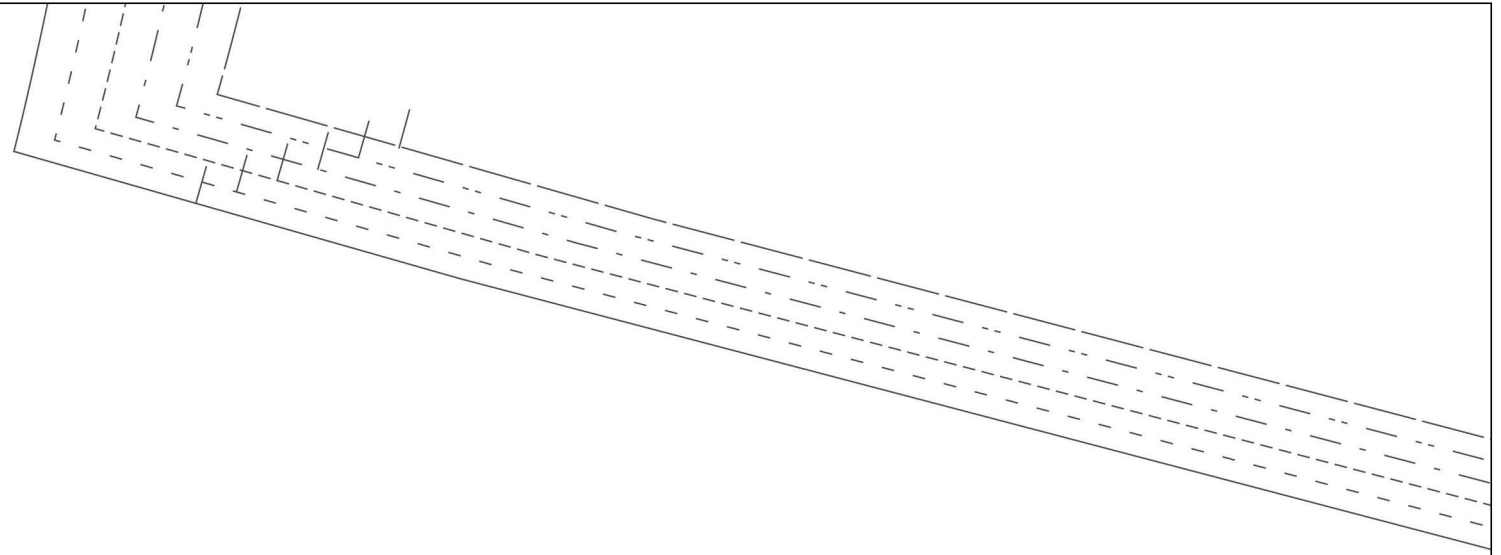
20



3C

# 4C

CARDIGAN CINDY  
Rückenteil 2A  
1 x im Bruch  
Back 2A  
1 x on fold

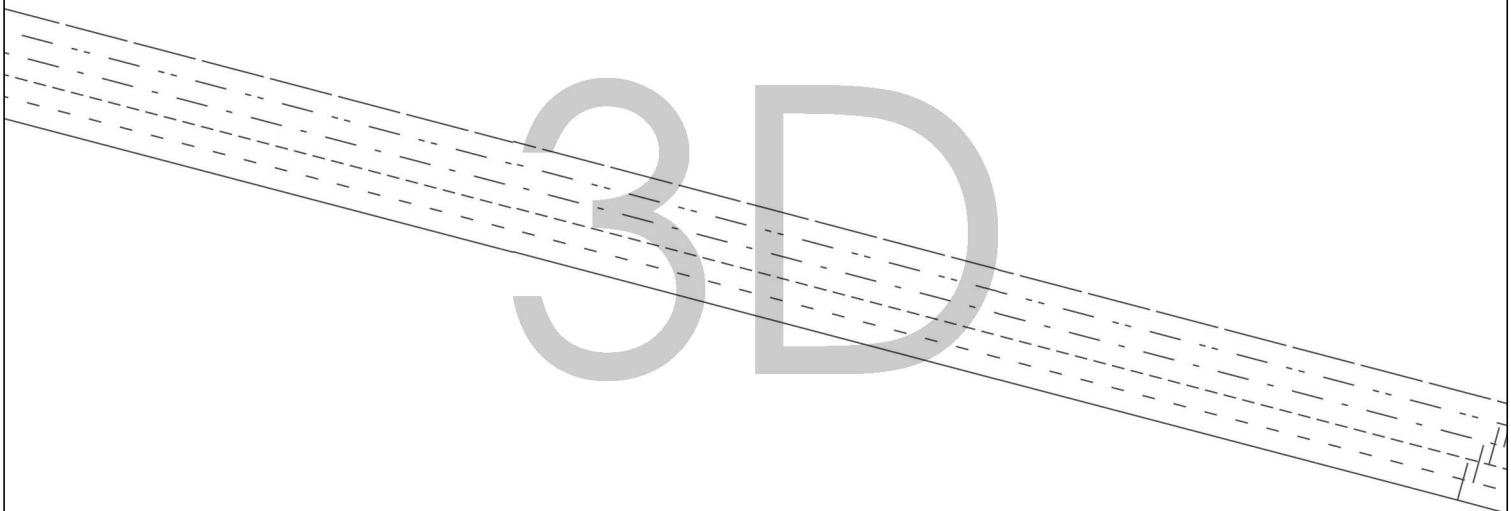


1D

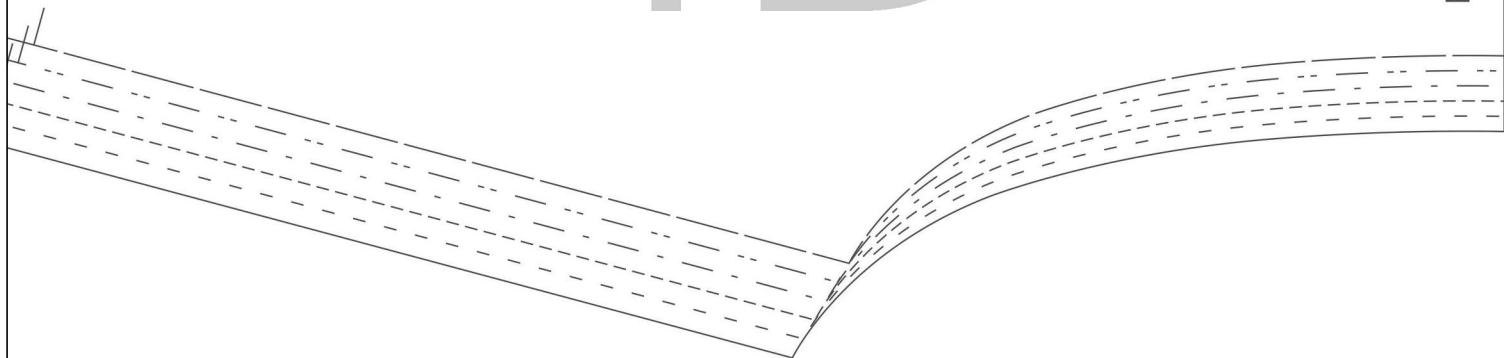
A decorative graphic consisting of several parallel lines that slope downwards from left to right. The lines include a solid line, a dashed line, and a dash-dot line, creating a layered, geometric effect.

2D

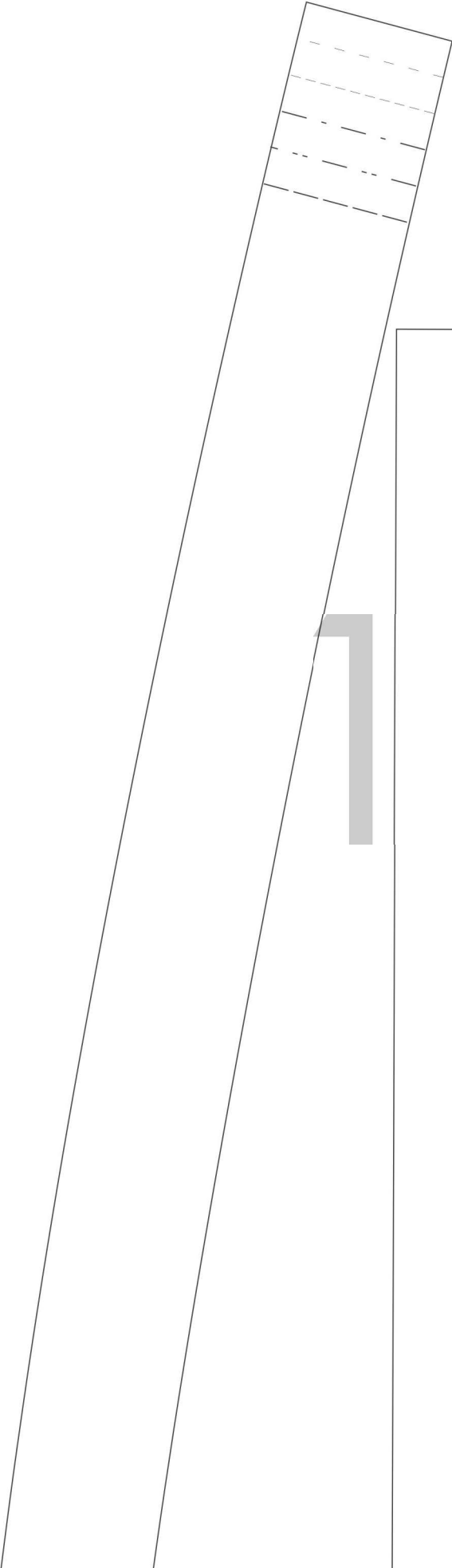
3D



# 4D







TE

CAR  
V

2E

RDIGAN CINDY  
Vorderteil 1B  
2 x

Fadenlauf/ Grainline

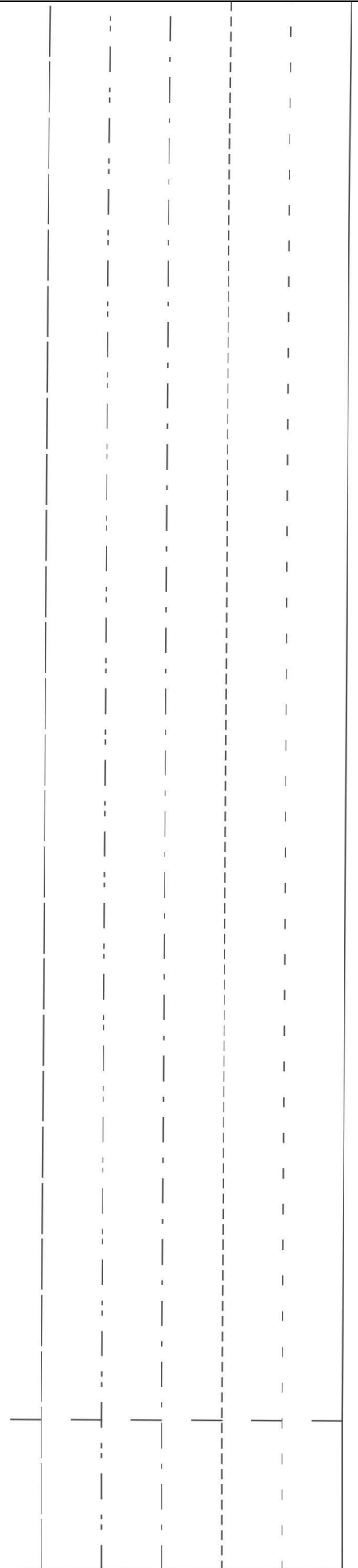
1F



Front 1B  
2 x

2F

*Hemmers Itex*  
fabrics for your creativity



Vord. Besatz 2 x  
Front facing 2 x

1 G

2G

**Hemmers Itex**  
fabrics for your creativity

1 H

Back 2B  
1 x on fold

CARDIGAN CINDY  
Rückenteil 2B  
1 x im Bruch

2H