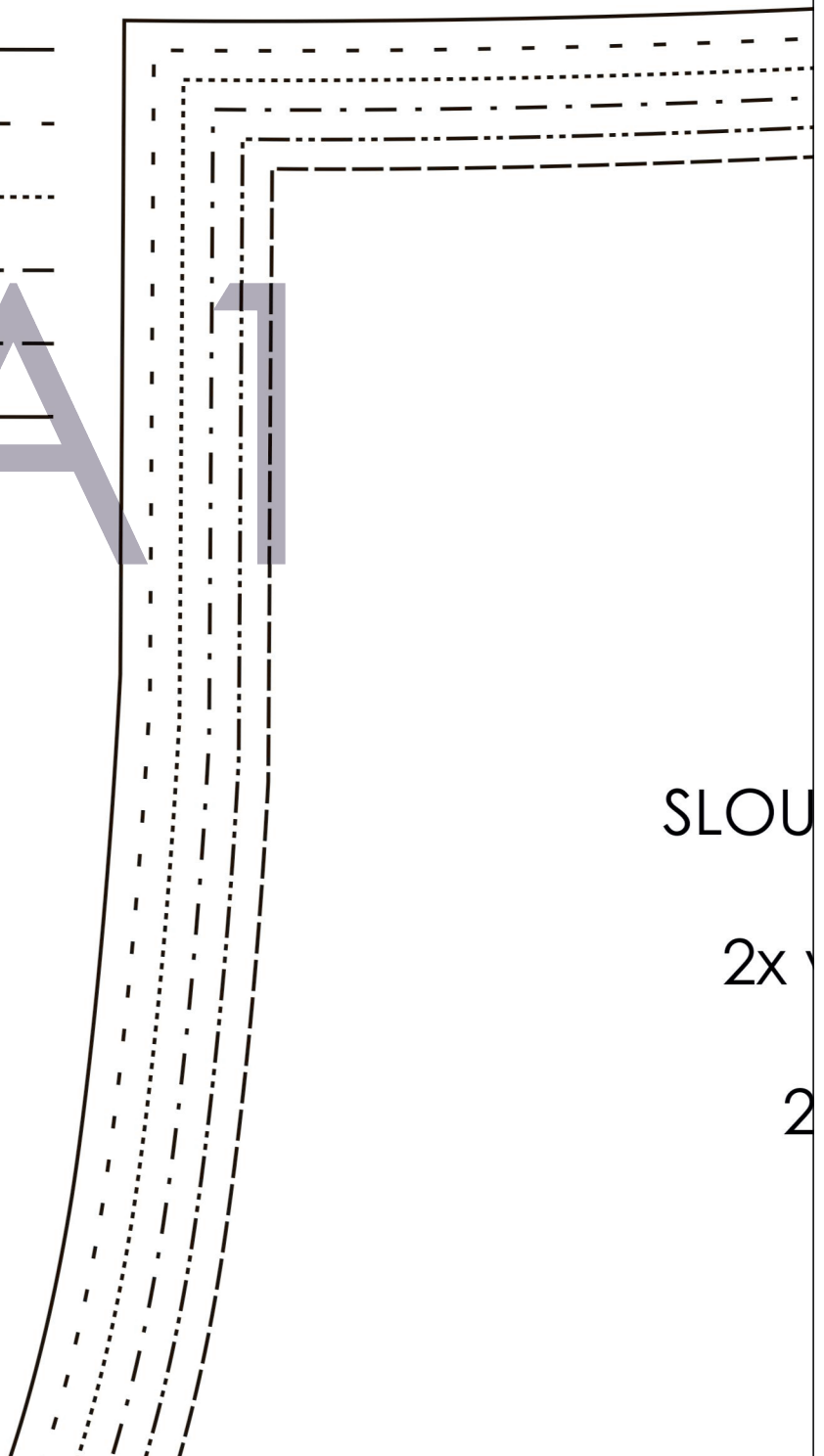
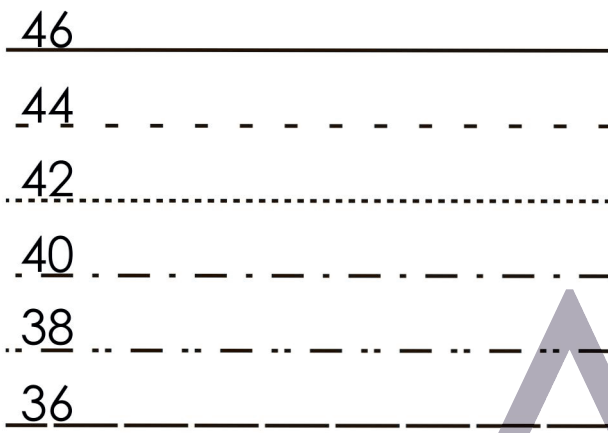
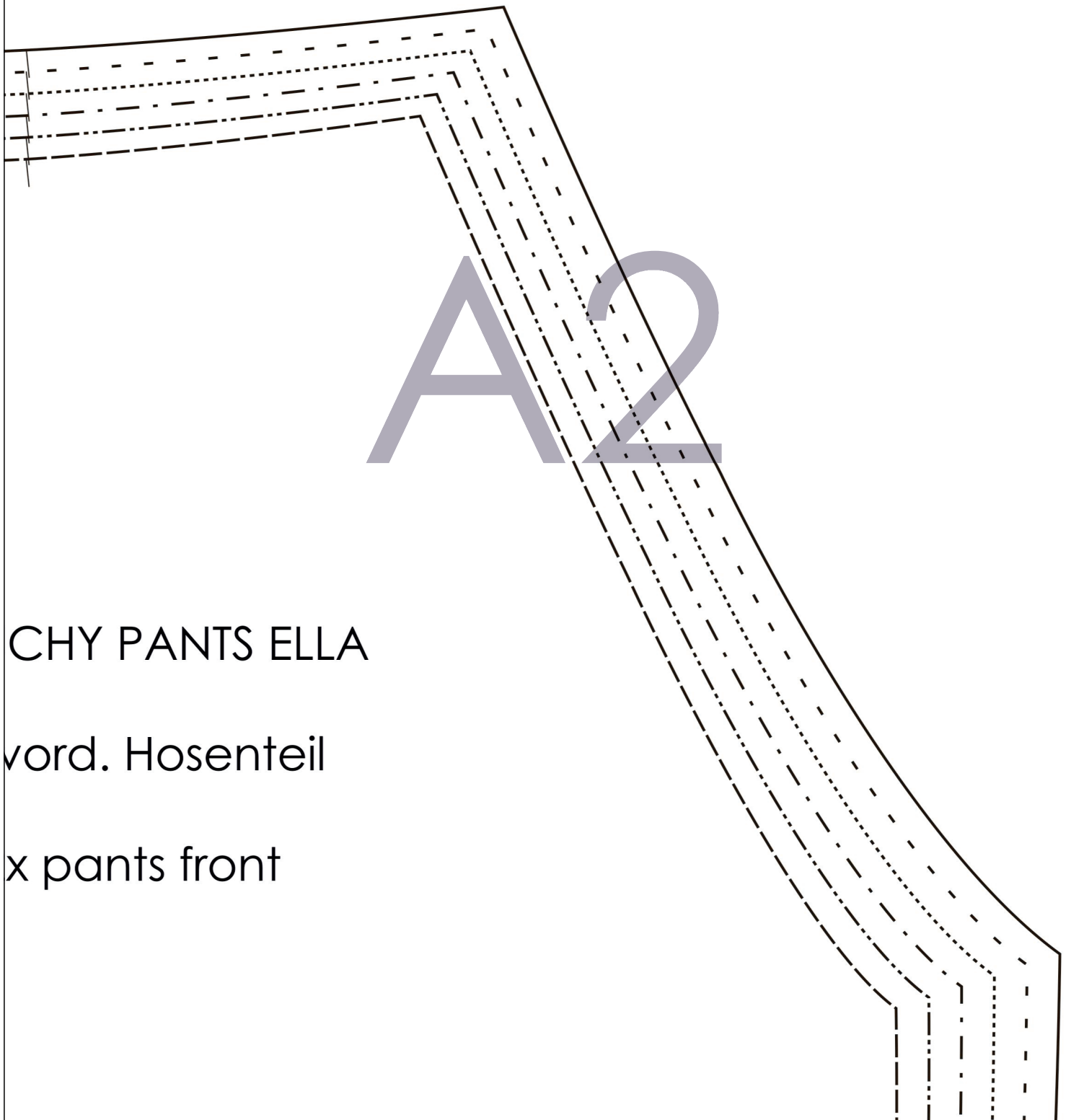


Der Schnitt enthält keine Nahtzugabe.  
Seam allowance not included.



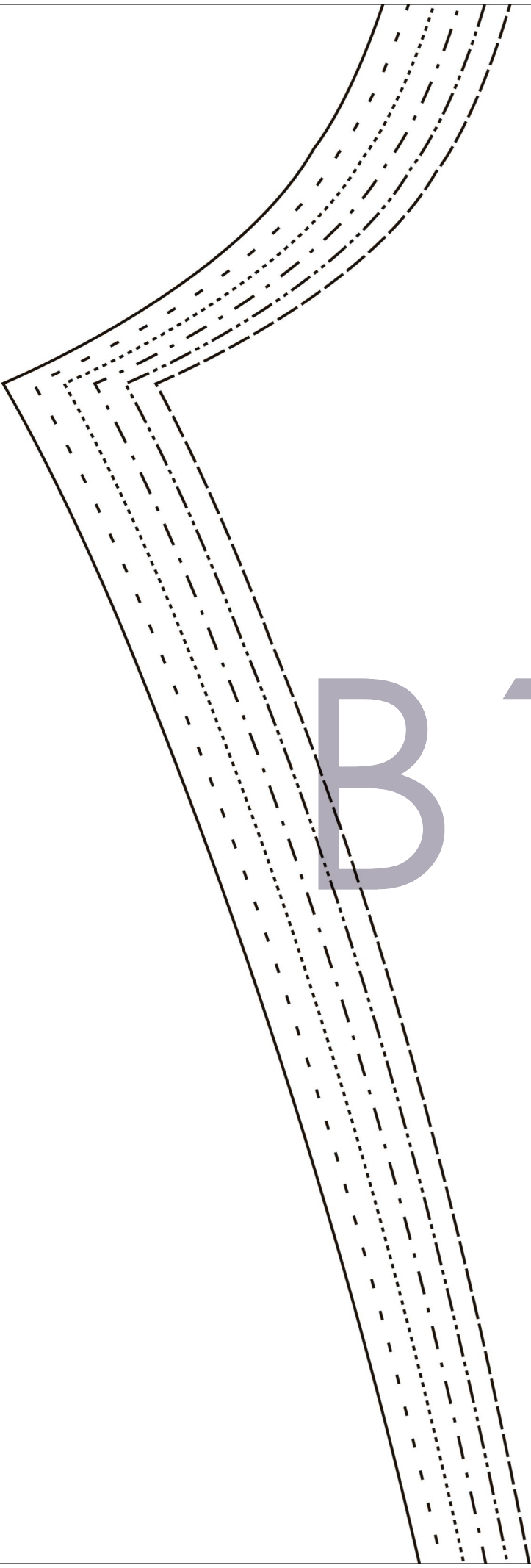
SLOU  
2x  
2



CHY PANTS ELLA

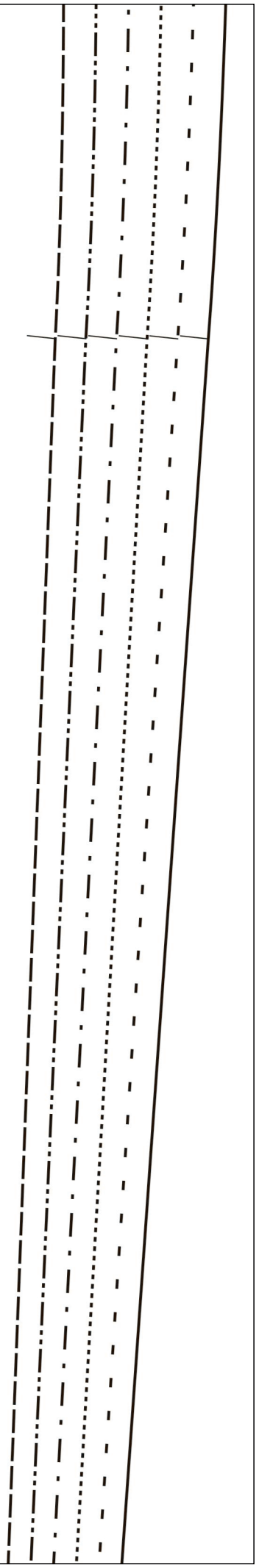
vord. Hosenteil

x pants front



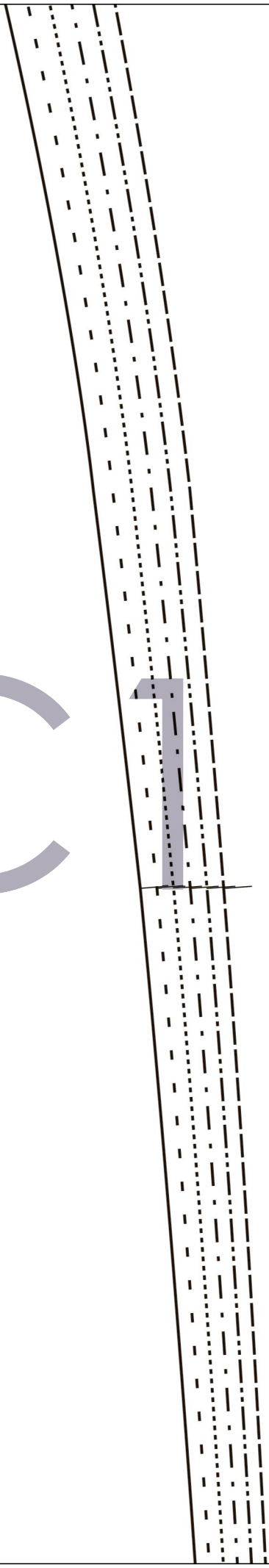
B 1

B2

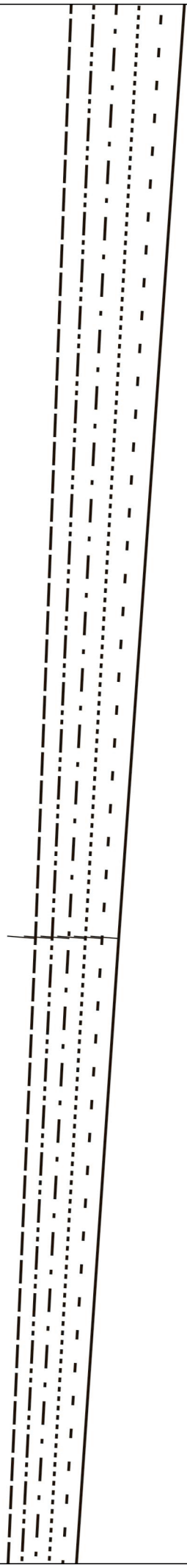


C

1



C2



# SLOUCHY PANTS ELLA

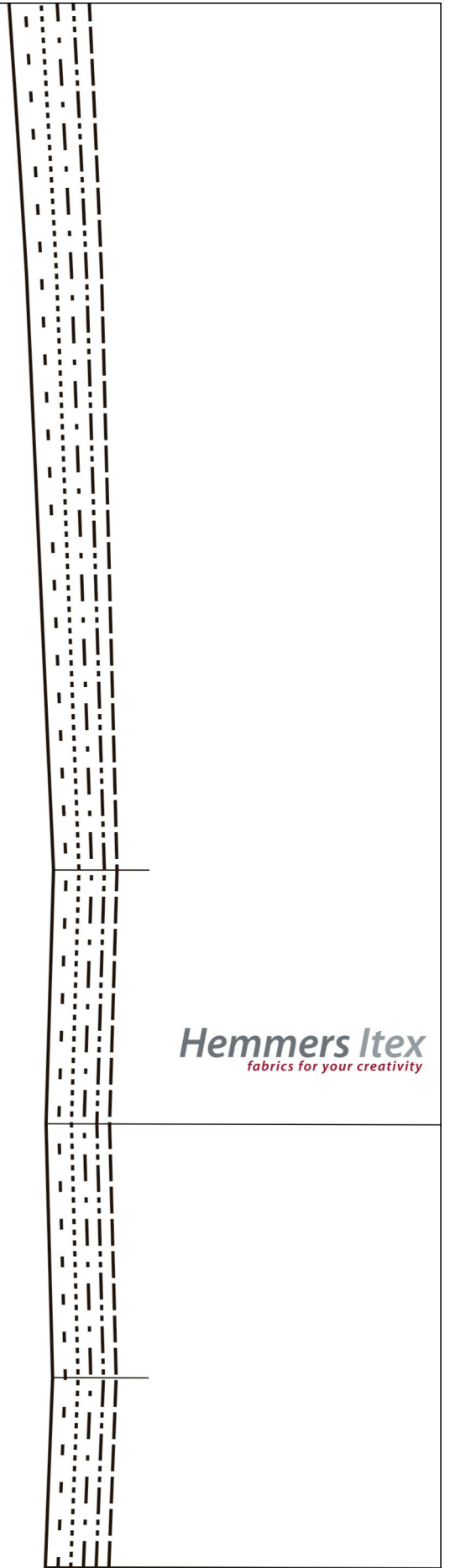
Vord. Bund  
1 x im Bruch

waist band front  
1 x on fold

**Hemmers Itex**  
*fabrics for your creativity*

Stoffbruch/Foldline

**Hemmers Itex**  
*fabrics for your creativity*

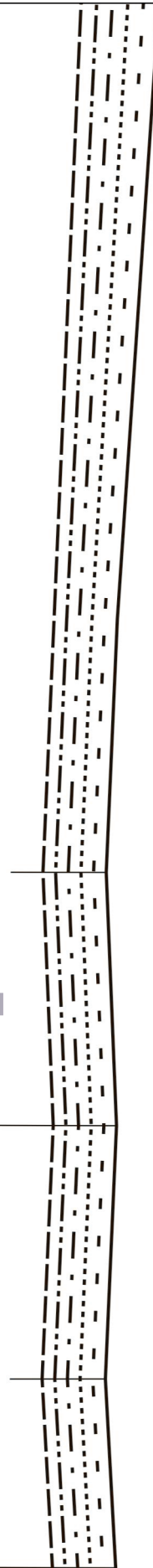


Fadenlauf/Straight grain



# D2

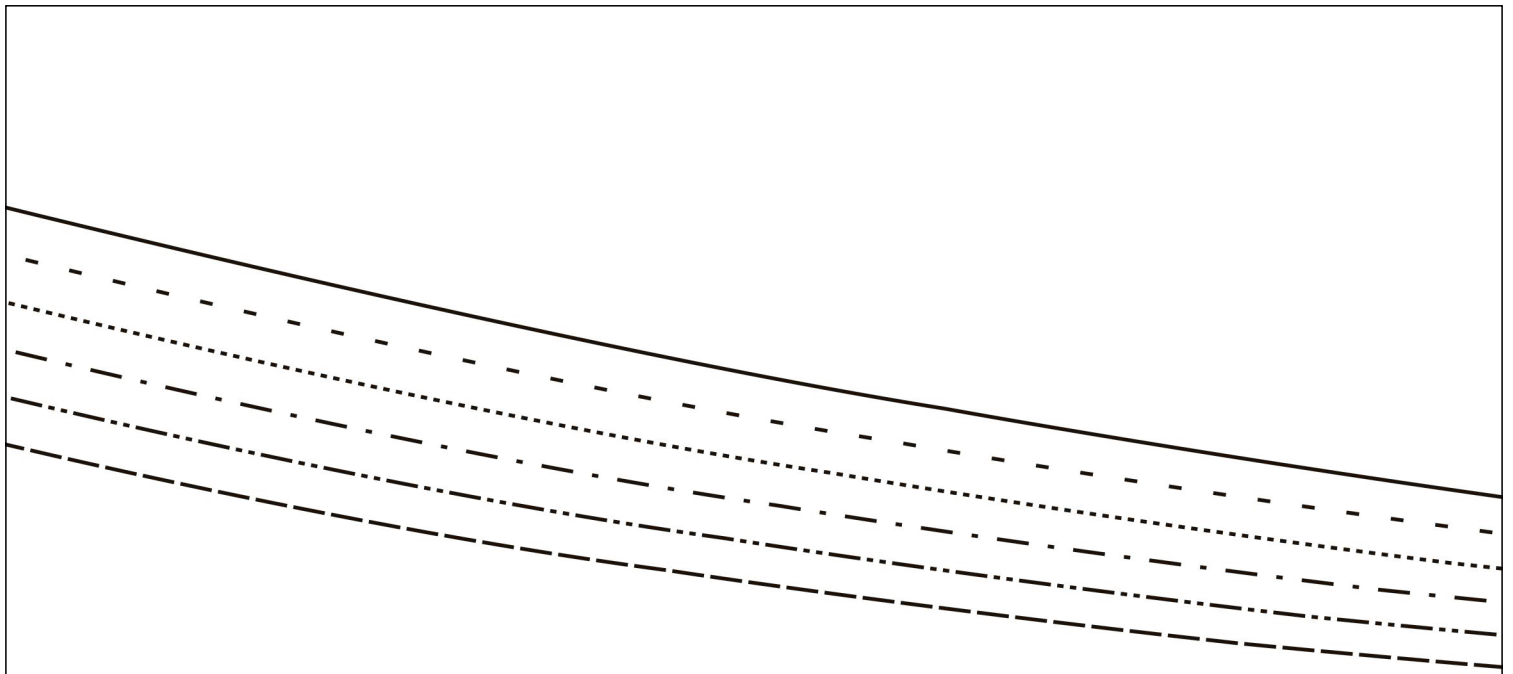
Umschlag Umbruch/cuff foldline





E1





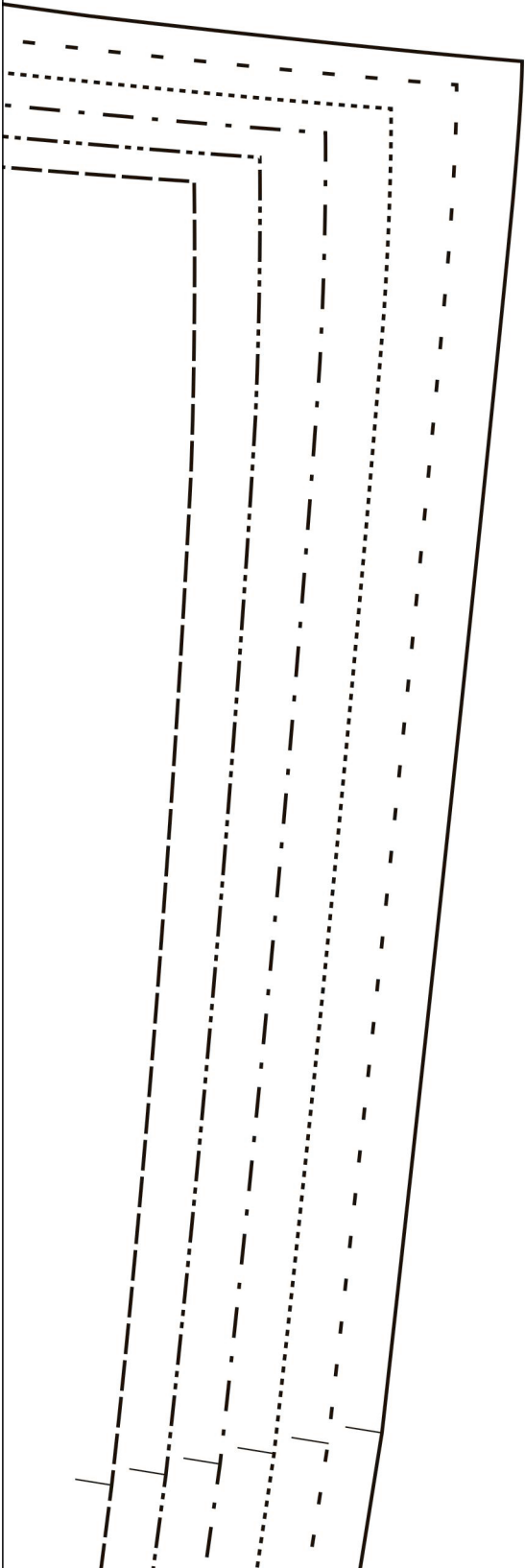
|

E2

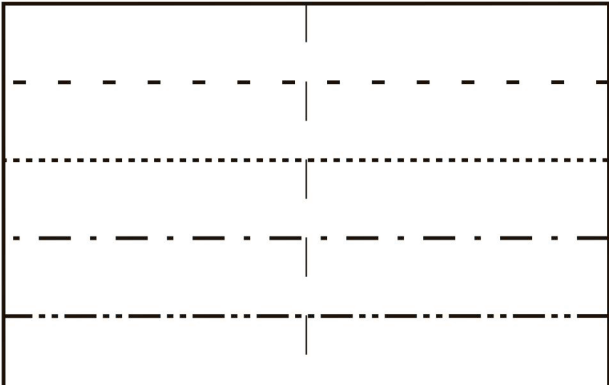
SLOUCHY PANTS ELLA

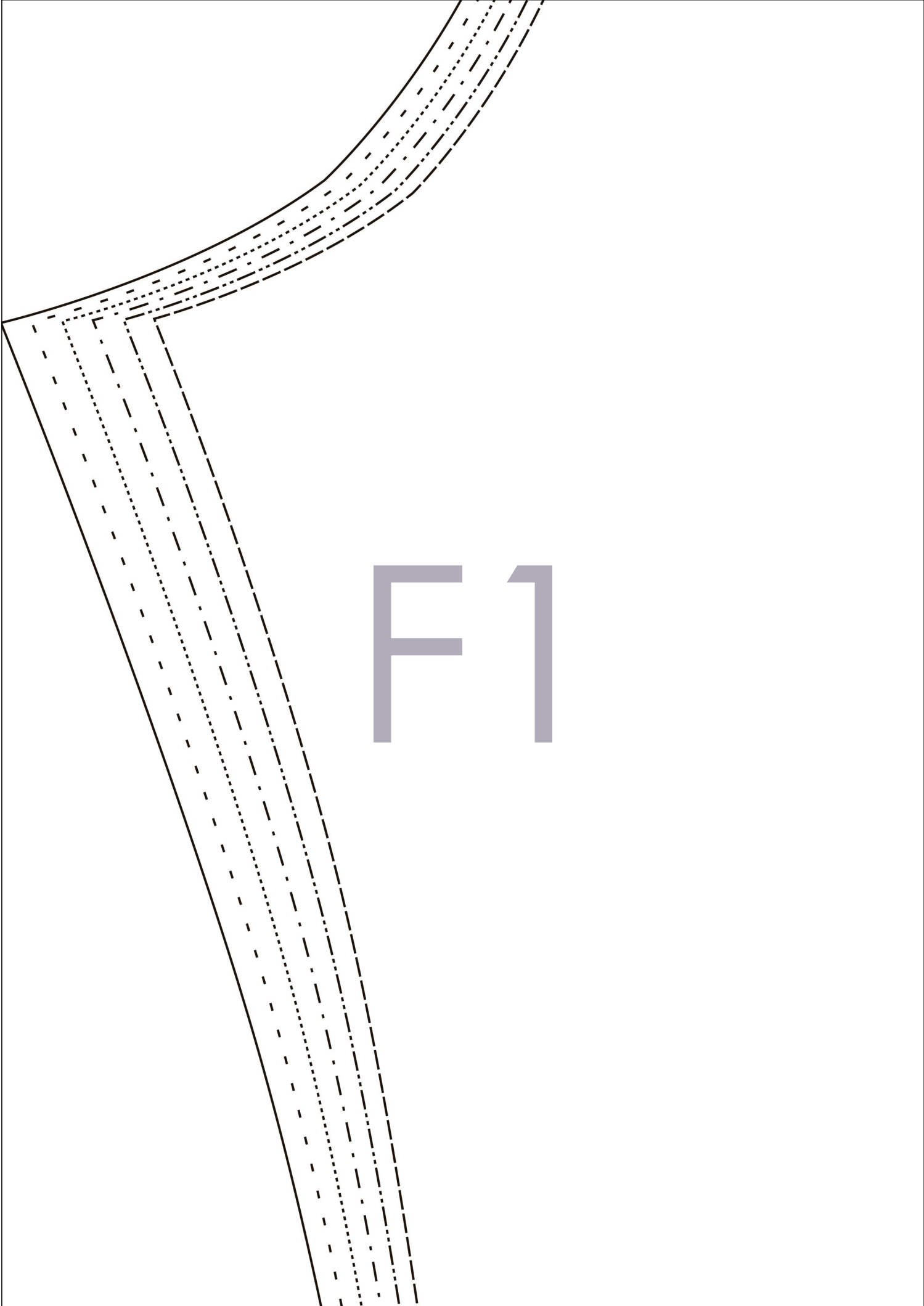
2x rückw. Hosenteil

2x pants back



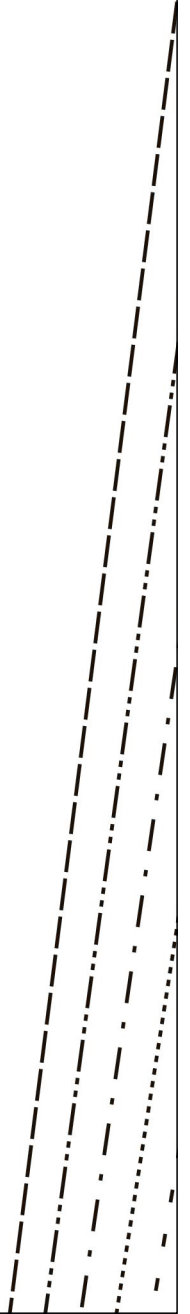
E3





F1

# F2

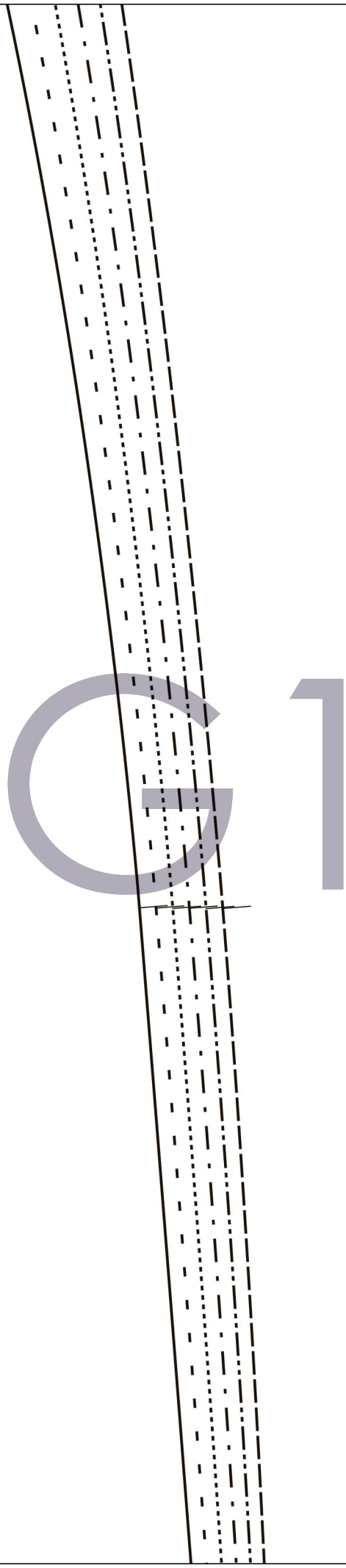




SLOUCHY PANTS ELLA  
Rückw. Bund  
1 x im Bruch

waist band back  
1 x on fold

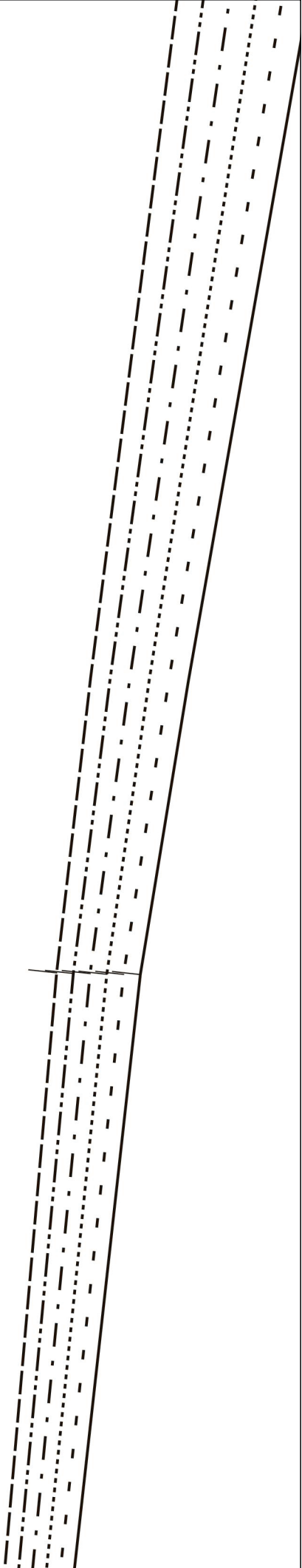
Stoffbruch/Foldline



A technical drawing of a cylinder. A cutting plane is shown as a solid line passing through the center of the cylinder. The part of the cylinder to the right of the cutting plane is shown in section, indicated by a section line consisting of two parallel lines: the outer one is dashed and the inner one is dotted. The drawing is centered on a white background.

CG 1

G2





Fadenlauf/Straight grain

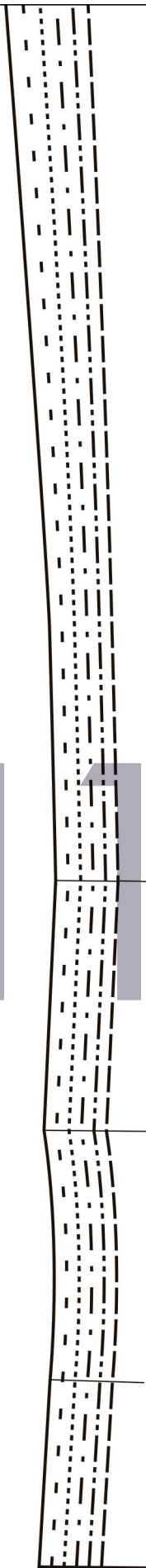
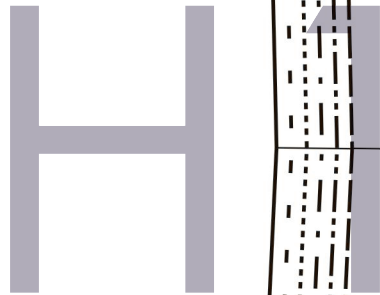
# G3

SLOUCHY PANTS ELLA

2x Taschenbeutel

2x pocket

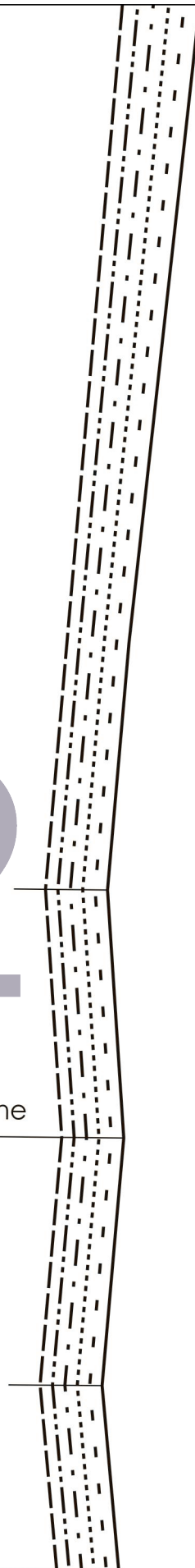
*Hemmers Itex*  
fabrics for your creativity



**Hemmers Itex**  
*fabrics for your creativity*

# H2

Umschlag Umbruch/Cuff foldline





Fadenlauf/Straight grain

# H3

SLOUCHY PANTS ELLA

2x Taschenbeutel Futter

2x pocket facing

**Hemmers Itex**  
fabrics for your creativity